

SCANIT



PARTS[®]

Warehouse Operations Scanner Manual

Receiving • Part Inquiry • Cycle Counting • Bin Changes



C66 + Pistol
Optional 5200mAh Pistol Battery

Innovative Programming Systems

Updated April 2026

1. Your Scanner Hardware

Your dealership may use one or more of these scanners for daily warehouse work. The 6059+ can scan and print labels. Chainway scanners can scan but cannot print — labels print from the web dashboard instead.



Avery Dennison Monarch 6059+

Scan + print label gun. Scans a barcode and prints a shelf label in one motion.

- Android 12.1 touchscreen
- Built-in 2" thermal label printer
- WiFi 802.11 a/b/g/n/ac + Bluetooth 5.1
- Removable battery with charging cradle
- Reads 1D and 2D barcodes



C66 + Pistol
Optional 5200mAh Pistol Battery

Chainway C66 (scan only — no printer)

Compact handheld scanner. Does everything the 6059+ does except print labels.

- Android 11/13, 5.5" touchscreen
- 4420 mAh removable battery (8+ hours)
- Optional pistol grip
- USB-C charging



C72 + Pistol

Chainway C72 (scan only — no printer)

Industrial rugged scanner with built-in pistol grip. For large warehouses.

- Android 11/13, 5.2" touchscreen
- 8000 mAh battery (full day)
- WiFi + Bluetooth

Scanner Comparison

Feature	6059+	C66	C72
Scan barcodes	Yes	Yes	Yes
Print labels	Yes	No	No
Receiving	Yes	Yes	Yes
Part Inquiry	Yes	Yes	Yes
Cycle Counting	Yes	Yes	Yes
Bin Changes	Yes	Yes	Yes

Using a Chainway scanner? You can do all the same warehouse tasks. The only difference is that labels print from the web dashboard instead of on the scanner itself. Everywhere this manual says "6059+ only," it means label printing.

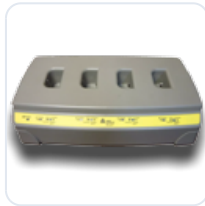
2. Getting Started

Power On / Power Off

Press and hold the **power button** for 2-3 seconds to turn on. To turn off, hold the power button and tap **Power off**.

Charging

Scanner	How to Charge
6059+	Place the battery in the charging cradle or use the 4-bay charger for multiple batteries at once.
Chainway C66/C72	Plug a USB-C cable into the bottom of the scanner.



Changing the Battery

- 1 Power off the scanner.
- 2 **6059+:** Press the battery release and slide the battery out. **Chainway:** Remove the back panel and lift out the battery.
- 3 Insert the new battery. Make sure the contacts line up and it clicks into place.
- 4 Power on the scanner.

Loading Labels (6059+ only)

The 6059+ prints 2" x 2" adhesive labels, 300 per roll.

- 1 Open the **printer door** on the front of the scanner.
- 2 Remove the empty roll core. Place the new label roll in the compartment with labels feeding from the bottom.
- 3 Feed the label strip through the **print head guide**. Pull a few inches of labels out the front.
- 4 Close the printer door firmly until it clicks.
- 5 If labels are not printing correctly, **calibrate the black mark sensor**: go to Settings > Printer Setting > Printer Setup > Supply > Calibrate Black Mark Sensor.



Labels printing blank? Run the black mark sensor calibration. Tap it only once — it may print a few blank labels during calibration. See the *6059 Printer Error Guide* for detailed steps.

Rebooting the Scanner

Soft reboot: Hold the power button for 2 seconds, tap **Restart**.

Hard reboot: Hold the power button for **10 seconds** until the screen goes black. Press the power button to turn it back on.

3. Connecting to WiFi

The scanner must be on WiFi to talk to the server. You do not need to log in first.

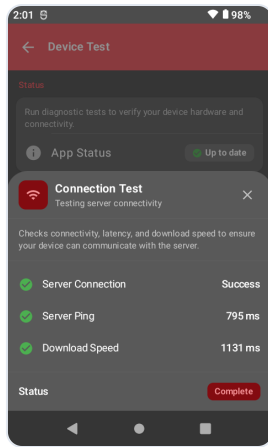
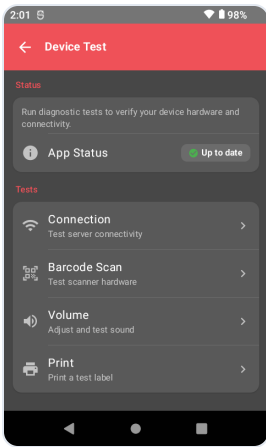
- 1 **Swipe down** from the top of the screen.
- 2 Tap **Internet**.
- 3 Turn WiFi ON. Select your network.
- 4 Enter the password and tap **Save**.
- 5 **Swipe up** to return to SIPScan.
- 6 Run a **Connection Test** (Section 4) to verify.

WiFi Troubleshooting

Problem	Fix
Network not showing	Check WiFi is ON. Move closer to router. Ask IT if network is hidden.
Wrong password	Forget the network, reconnect, and re-enter the password.
Connected but no internet	Reboot the scanner. Try another network. Check the router.
Signal keeps dropping	Move away from metal shelving. Use 2.4 GHz for better range. Ask about adding access points.

4. Device Tests

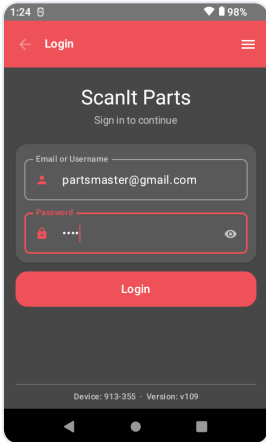
Open the menu (three lines) and tap **Device Tests**.



Test	What It Checks	Available On
Connection	Server ping, download speed. "Complete" = good. "Slow" = weak WiFi.	All scanners
Scan	Barcode hardware. Scan any barcode to test.	All scanners
Print	Prints a test label with "Print Test Passed."	6059+ only
Volume	Speaker test. Move slider and tap Play Sound.	All scanners
Signature	Touchscreen. Draw with your finger.	Chainway only
Camera	Camera preview.	Chainway only
Vibration	Vibration motor.	C66 only
Version	"Up to date" or "Update Available."	All scanners

5. Logging In

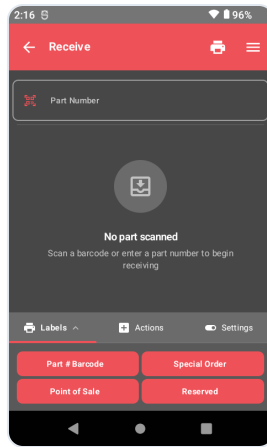
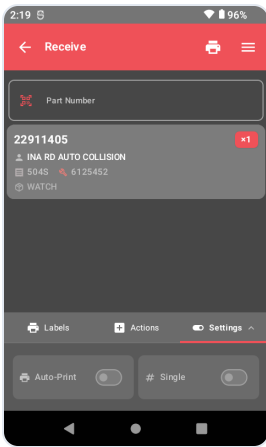
- 1 Enter your **username** and **PIN**.
- 2 Tap **Login**. Select a store if you have more than one.



6. Receiving Shipments

Important: Pull orders from the dashboard before receiving. If orders are not pulled, the scanner will not have your open orders.

- 1 From the main menu, tap **Receive**.
- 2 Scan the **shipment barcode** or select the order from the list.
- 3 Scan each **part barcode** as you unpack. The scanner matches it to the order and shows the part details.
- 4 Check the quantity. If correct, move to the next part.



6059+ only — Label Printing: The 6059+ prints a shelf label right after you scan each part. Labels include part number, bin location, and barcode. Special order and POS labels print with color indicators.

Print History: Tap the **clock icon** in the top bar to see recent print jobs. Shows part number, label type, time, and quantity.

7. Part Inquiry

Look up any part to see its bin location, quantity, and price.

- 1 From the main menu, tap **Part Inquiry**.
- 2 **Scan the barcode** or type the part number.
- 3 The scanner shows: bin location, quantity on hand, on order, cost, list price, and description.

Part Inquiry Results

6059+ only: Tap the Labels tab to print a shelf label for the part right from the inquiry screen.

Add to Lookup

If you scan a barcode the system does not know (like a UPC on a tire or aftermarket box), SIPScan asks you to map it. Type the DMS part number and tap **Add**. Next time anyone scans that barcode, it will find the right part.

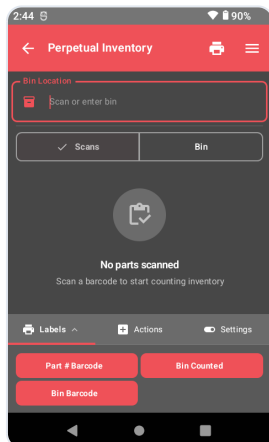
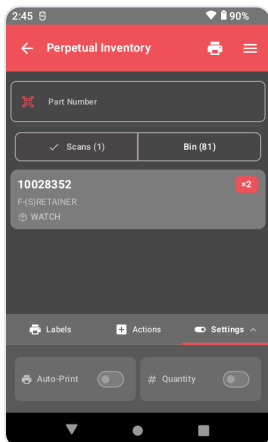
8. Perpetual Inventory (Cycle Counting)

Count a section of the warehouse each day to keep inventory accurate without a full physical inventory.

- 1 From the main menu, tap **Perpetual Inventory**.
- 2 Check your **Settings** tab: choose count mode and label printing (6059+ only).
- 3 **Scan the bin barcode**, then scan each part in the bin.
- 4 Enter **quantity** for parts with more than one piece.

5

Move to the next bin and repeat.

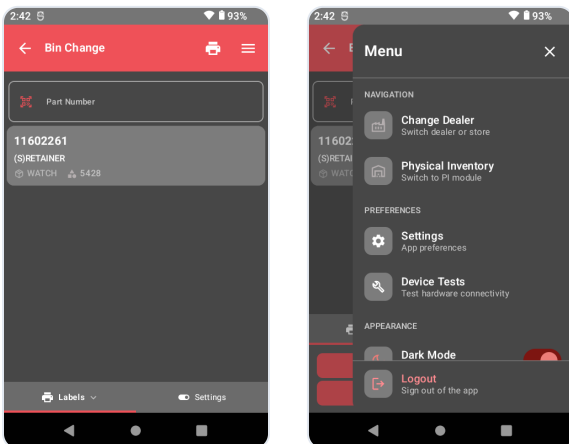


Dashboard tools: Check the Analytics tab for accuracy trends. The Bins Not Counted report shows what you missed. The Lost Sales report shows parts that were out of stock.

9. Bin Changes

Move a part from one bin to another.

- 1 From the main menu, tap **Bin Change**.
- 2 Scan the **part barcode** or type the part number.
- 3 Scan the **new bin barcode** or type the new bin location.
- 4 The system updates the bin in the DMS.



6059+ only: After the bin change, the 6059+ prints a new shelf label with the updated bin location. You can set label options in the Settings tab.

10. Troubleshooting

Problem	Try This First	Still Not Working?
Won't power on	Charge for 30 minutes. Try a different cable or cradle.	Remove and reseal the battery. Contact IPS support.

Won't scan	Run the Scan Test. Clean the scan window. Check the barcode is not torn.	Reboot. If Scan Test fails, contact IPS support.
Won't print (6059+)	Check labels are loaded. Run the Print Test. Check the printer door is closed.	Calibrate the black mark sensor. See the 6059 Printer Error Guide.
Labels jamming (6059+)	Open the printer door. Remove any stuck labels. Re-feed the roll.	Make sure labels are 2" x 2". Contact IPS for replacement rolls.
Printing blank labels (6059+)	Calibrate the black mark sensor (Settings > Printer > Supply > Calibrate).	Try a new label roll. The print head may need cleaning.
Labels not sticking (6059+)	Make sure you are using IPS-approved labels. Store labels in a cool, dry place.	Clean the shelf surface. Contact IPS for new label rolls.
WiFi keeps dropping	Move closer to router. Use 2.4 GHz. Check the router.	Ask IT about adding access points. Metal shelving blocks signal.
Connection Test fails	Check WiFi is connected. Reboot the scanner.	Try a different network. Contact IPS support.
App crashes	Force close and reopen SIPScan. Reboot the scanner.	Check for updates in Device Tests. Contact IPS support.
Battery drains fast	Lower brightness. Close unused apps. Turn off Bluetooth.	Battery may be worn. Contact IPS for a replacement.
Can't log in	Check username and PIN. Usernames are case-sensitive.	Ask your manager to check your account or reset your PIN.
Orders not showing in Receive	Pull orders from the dashboard first. Wait a minute and refresh.	Check the DMS connection on the dashboard Settings page.

Need help? Call IPS at **810-695-9332** (Mon–Fri, 8am–5pm ET) or email support@ipsdev.com. You can also open a support ticket from the dashboard by tapping the **?** icon.